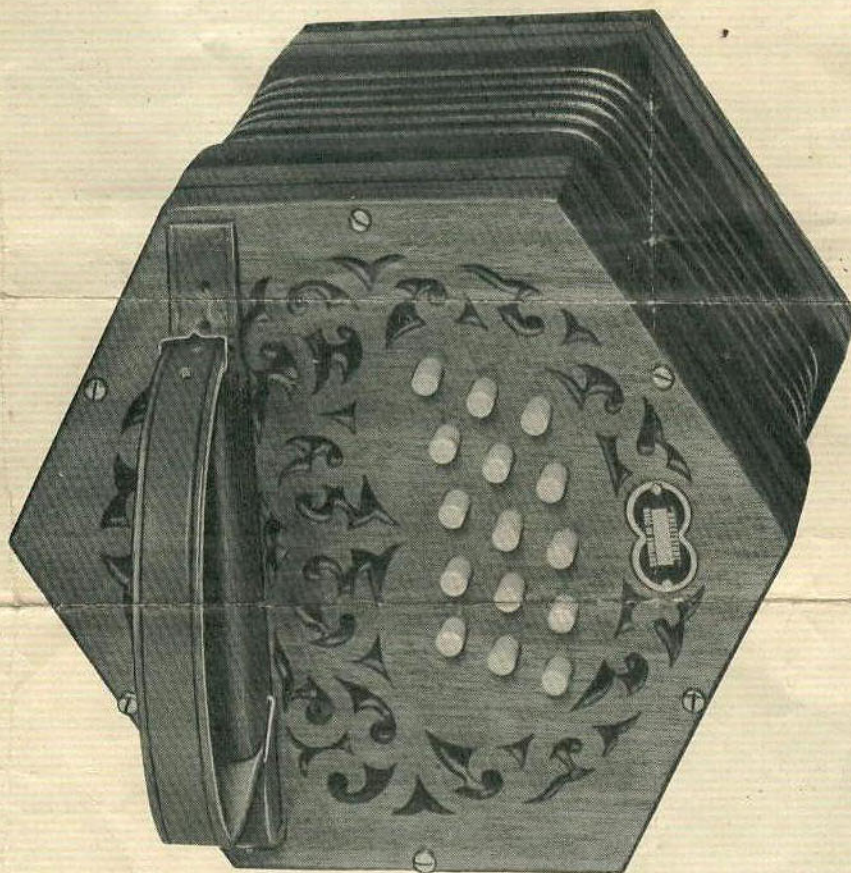


World's
Best

WHEATSTONE

for
100 years

CONCERTINAS



ANGLO-CHROMATIC MODELS

No. 1A. POPULAR MODEL, 20 keys, mahogany finish, non-corrosive Erinoid keys, five-fold leather bellows, steel reeds, including case.

No. 2A. 30 keys, specification as above.

No. 3A. BEST QUALITY, 20 keys, Rosewood or Ebony finish, nickel-silver capped keys, six-

fold black leather bellows, large scale steel reeds, leatherette case.

No. 4A. 30 keys, specification as above.

No. 5A. 36 keys, specification as above.

No. 6A. 40 keys, specification as above.

See overleaf for the famous ENGLISH & DUET Fingering Models which are also on our production programme.

C. WHEATSTONE & COMPANY, LTD.

15 WEST STREET, LONDON, W.C.2, ENGLAND

Factory and Export Dept.: Frederick Close, Stanhope Place,
Marble Arch, London, W.2, England · PAD. 7686.

(15 Sept 1947)

WHEATSTONE

"ENGLISH" MODEL TREBLES

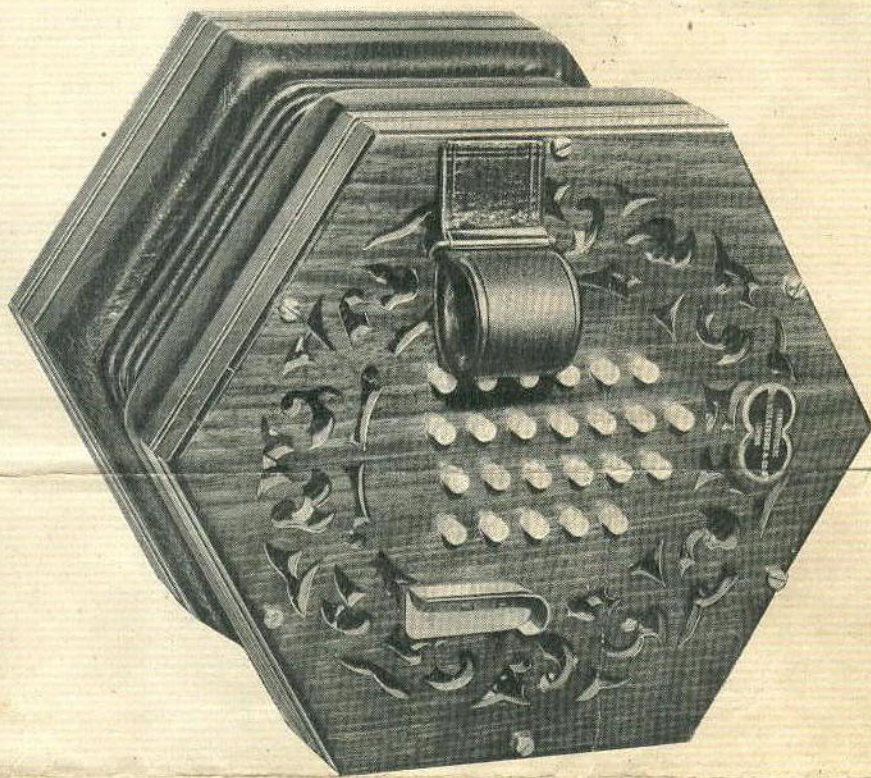
No. 1E. 48 keys, walnut finish, Eri-
noid keys, five-fold bellows, steel
reeds, in case.

No. 2E. 48 keys, Rosewood finish,
nickel-silver capped keys, five-fold
bellows, steel reeds, in case.

No. 3E. 48 keys, Ebony finish, silver
capped keys, six-fold bellows, steel
reeds, in case.

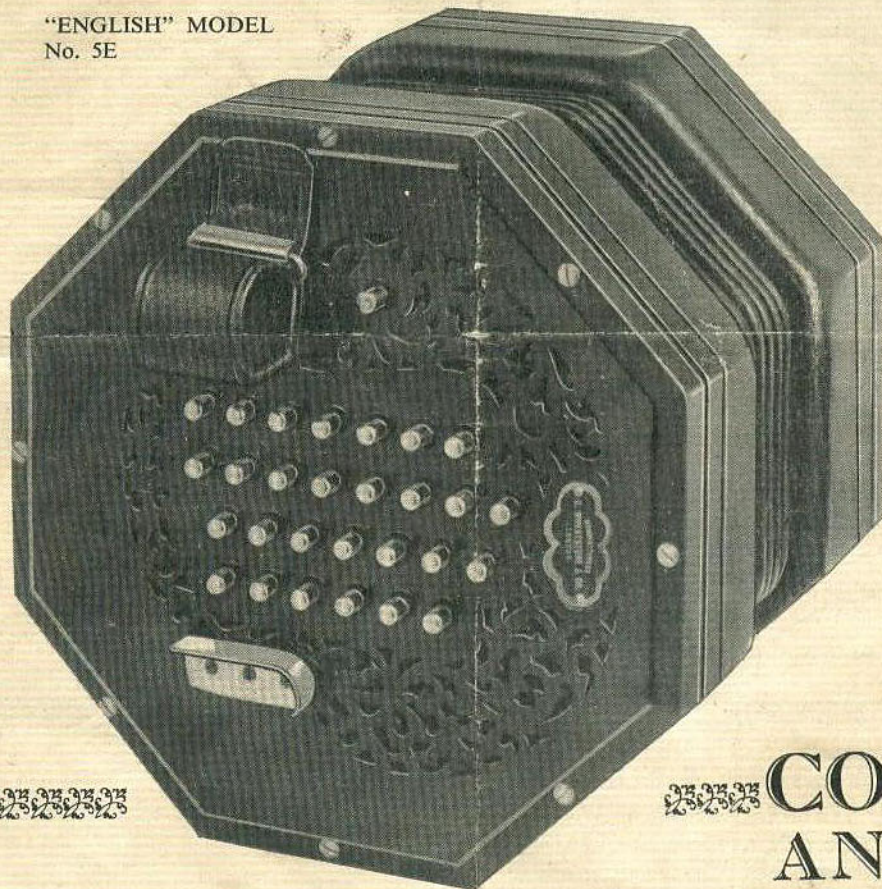
No. 4E. "AEOLA" new octagonal
model, 48 keys, Ebony finish, raised
keyboards, nickel-silver capped keys,
six-fold bellows, large scale steel reeds,
in case.

No. 5E. "AEOLA" new octagonal
model, 56 keys, same specification as
No. 4E.



"ENGLISH" MODEL No. 1E

"ENGLISH" MODEL
No. 5E



OTHER MODELS

The following models are also in our
production programme:—

Anglo-Chromatic Models (see overleaf)

48, 56 and 64-key English Tenor-Trebles.

56 and 64-key English Baritone-Trebles.

48 and 56-key English Baritones.

46, 58, 68, 72 and 80-key Duets.

48 and 55-key Duets, Crane or
"Triumph" fingering.

CONCERTINAS AND AEOLAS...